

# COME TO THE *Diamond Bell Ranch* FOR A REAL VACATION



*Around The Old Corral*

## FOR YOUR ENJOYMENT . . .

The Diamond Bell Ranch is located high in the rolling hills of Okanogan County, Washington. It lies in the heart of the cattle country, twenty-six miles east of Tonasket, the state's chief beef shipping town.

Enjoy sunny days and cool nights at 4300 feet elevation.

The center of activity is the Lodge in which are located the dining room and lounge. Evenings around the huge stone fireplace are never-to-be-forgotten memories. Cards and dancing for those who prefer them.



*Walker Lake (On the Ranch)*

## MEALS YOU'LL REMEMBER

You may be assured of excellent food, served family style with plenty of milk and cream, fresh vegetables, meat, home-made bread, tempting hot rolls and home-made pastries from our clean, light, airy kitchen. We take special pride in preparing good food.

There is a 40-acre lake on the ranch and the Lodge is situated close beside it.



*"Ride 'Em, Cowboy"*

## PICTURESQUE OLD WEST

Get away from city traffic, crowded streets and excitement! Everything remains natural in this part of the country and unspoiled by civilization.

Come to where you can have fun and rest, and get a brand new outlook on life! You will find plenty of relaxation and outdoor living.

Here is where you enjoy the hospitality and friendly atmosphere of the Old West. Even Nature seems to greet you.

There are rodeos nearby nearly every week throughout the summer.

This is an operating stock and grain ranch and you will find enjoyment in watching the regular ranch activities.

There is haying, summer fallowing, harvesting, etc., at the proper times; and many other phases of ranch life will attract your attention.



*Guests on a Hay Ride*

## RIDE RANGES AND HILLS

Ride your horse over wooded trails bordered with sweet scented pine and tamarac trees, then emerge into the open country again where there are many vantage points from which you will be filled with awe when you look at the ranges of hills, miles and miles away. The ground is carpeted with wild flowers well into the summer and the scenery will always be remembered.

Lake Bonaparte and Lost Lake are within easy riding distance, and for you hardier ones the trip to the Lookout Tower on Mount Bonaparte, 7280 feet high, is inspiring. The trip to Mount Annie is also pleasant.



*Harvest Time*



*Part of Our Fields and  
Riding Country Beyond*



*Round Up Time*

### A SPORTSMAN'S PARADISE

You can be assured of some of the finest hunting in the country. There are plenty of ducks on the lake and deer are plentiful. Special arrangements can be made for guides.

Throw your line out and experience the thrill of catching Rainbow trout as they come in fighting. The lake is stocked each spring to insure good fishing.

### WHAT TO WEAR

Every thing is informal, wear what you wish. Levis, dungarees, slacks, cowboy boots, or sturdy, comfortable shoes are all in style. You should wear cowboy boots for riding, though.

The temperature on most of our summer days ranges from 60° to 75°—when it rises to 80° we think it is hot.

We often have soft, cool breezes in the afternoons and evenings so bring your sweaters or jackets.

Our beds are equipped with luxurious springs and spring filled mattresses. No matter how tired you might be at the end of a day, you will be ready for another full one the next morning.

---

### RATES

**SINGLES:** \$70.00 per week.

**DOUBLES:** \$60.00 per week per person.

A 20% deposit is required with reservation.

**MAKE RESERVATIONS EARLY**

### HOW TO GET HERE

#### FROM THE COAST:

##### Automobile:

Highway 97 to Tonasket, then Highway 4 east to the Wauconda Store. A good road leads to the ranch two miles north of the store.

##### Bus:

Greyhound Line to Okanogan, then Okanogan Valley Line to Wauconda where we can meet you by arrangement.

#### FROM THE EAST:

##### Automobile:

Highway 2 to Wilbur, then Highway 4 via Republic to the Wauconda Store.

##### Bus:

Okanogan Valley Line from Spokane to Wauconda, where we can meet you by arrangement.

**Only Two Hours Drive from Grand Coulee Dam**

---

Guests by reservation only.

write to

## *Diamond Bell*

## **.. GUEST RANCH**

Wauconda, Wash.

On the Old Cariboo Trail

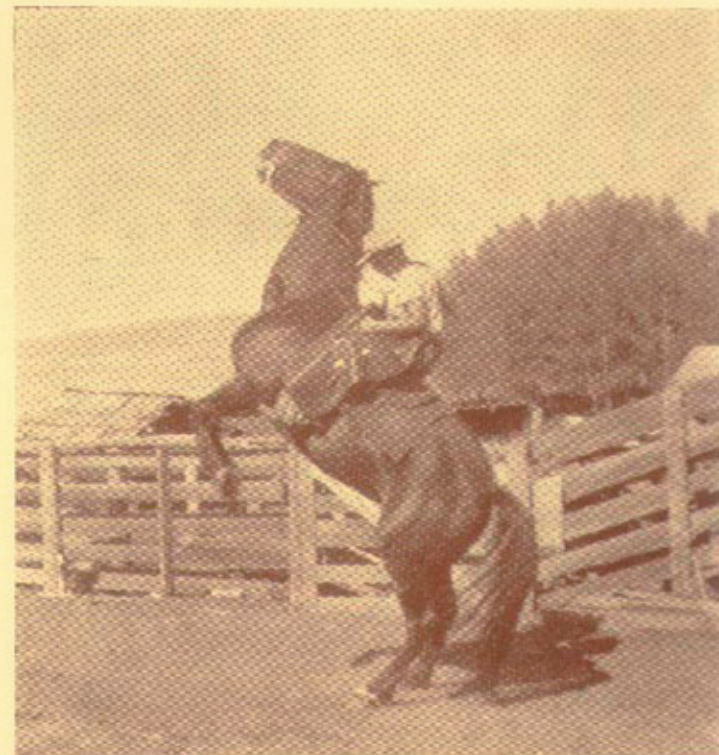
---

---

# *Diamond Bell*

## **.. GUEST RANCH**

ON THE OLD  CARIBOO TRAIL



Wauconda, Washington

In Okanogan County,  
Heart of the Cattle Country

---